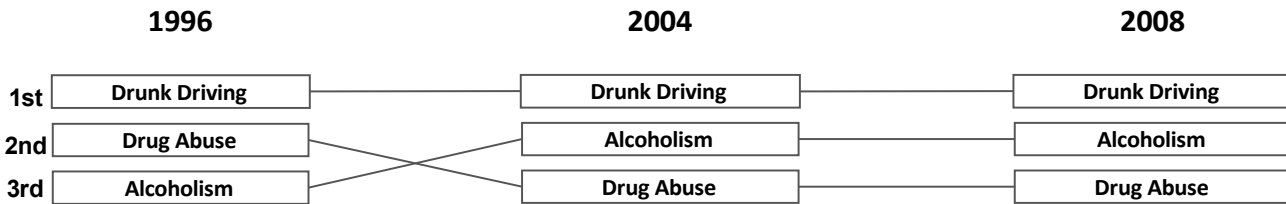


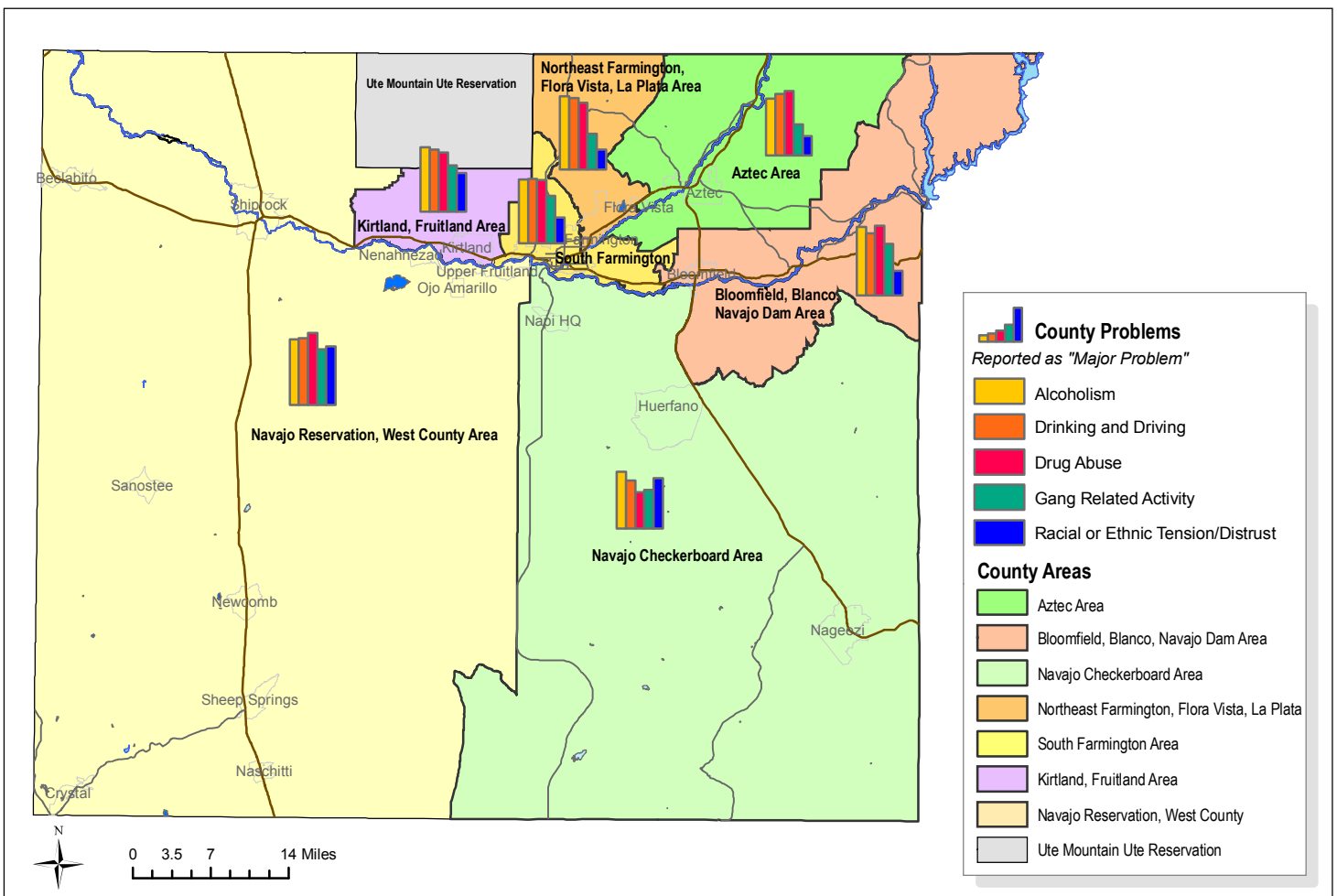
Perceptions of Community Problems in San Juan County, NM



According to San Juan County Partnership Needs Assessments (1996, 2004, 2008), alcoholism, drinking and driving, and drug abuse are top priority issues in San Juan County. Resident Survey respondents' concerns about gang-related activities and racial-ethnic tension and distrust have increased since the first survey in 1996.

The map below depicts levels of concern about these issues as identified by survey respondents in different areas of the county.* Notice that concerns related to alcoholism, drunk driving, and drug abuse are consistently high across the county. Concerns related to gang activity are less concentrated in Aztec, northeast Farmington, and other north-central areas of the county.

Respondents on the Navajo Nation, the Kirtland-Fruitland areas and Navajo Checkerboard areas expressed relatively higher levels of concern regarding racial and ethnic tension or distrust.



*The respondent survey was completed with a representative sample of 402 San Juan County residents in the Fall of 2007. Residents were aggregated into general areas of the county in order to explore general patterns. Further investigation would be necessary to determine whether these findings are truly representative of smaller community areas.